



48 Alport Way
LE18 3WN
£950 Per Month



Available February 2026! A delightful and surprisingly spacious 2 bedroom mid terraced home. The property briefly compromises of; Lounge, fitted kitchen diner to the ground floor. To the first floor are two double bedrooms. The property also benefits from Double Glazing, off road parking for two cars. Internal viewing is essential to not miss out.

- Two Bedrooms
- Available February 2026
- Town House
- Modern Throughout
- Off Road Parking
- Close to Wigston Town Centre
- Internet - Standard, Superfast & Ultrafast
- Council Tax Band B
- EPC Rating E



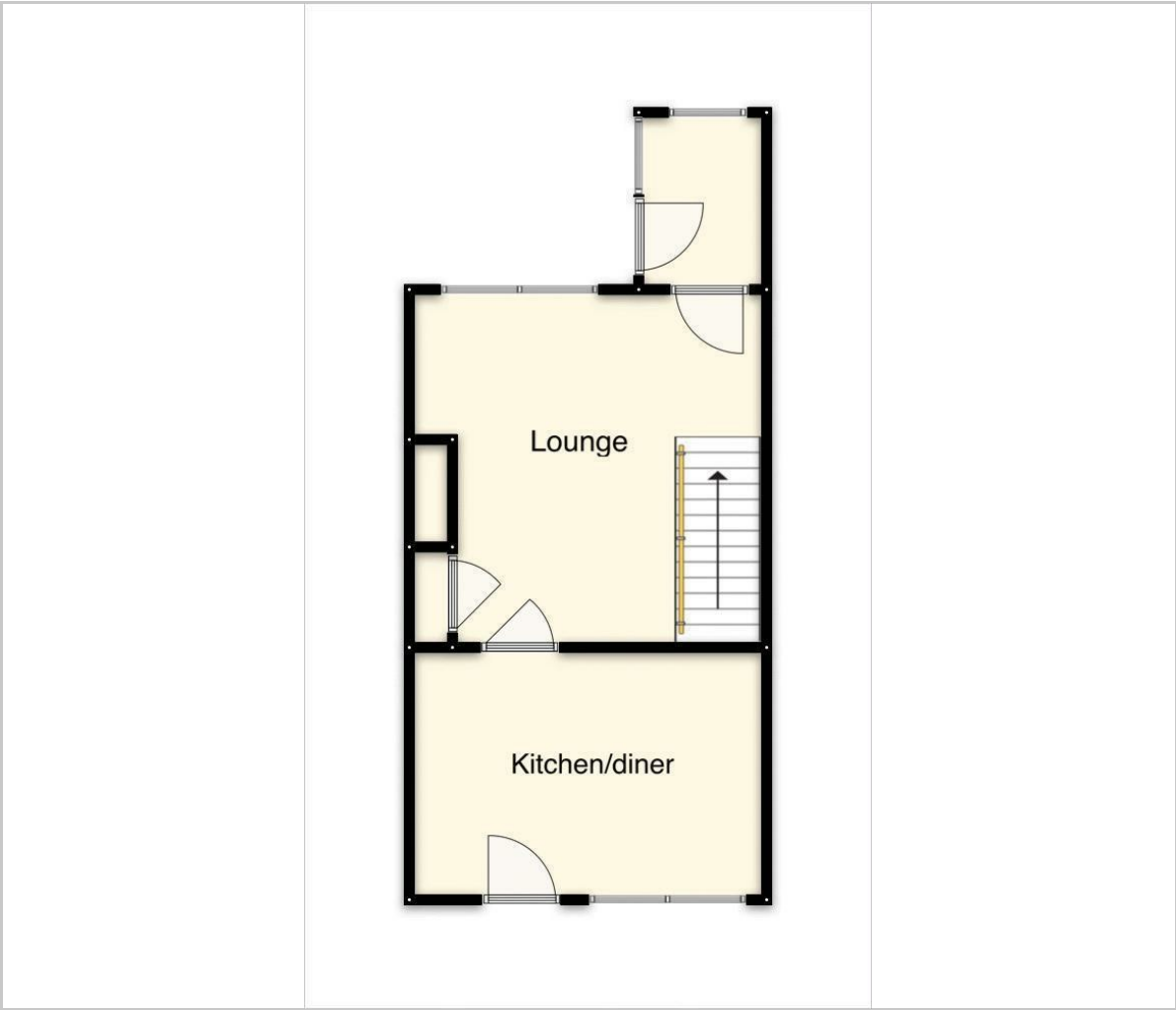
Viewing Arrangements

Please note, as part of the process and services to our landlord, all prospected tenants must view the property before submitting an application. For your application to be considered by the landlord, all adults must fill out one of our application forms following on from the viewing with one of our agents.

Tenancy Information

- Price : £950 PCM
- Holding Deposit: £219.00 (one weeks rent)
- Deposit : £1096.00 (including the holding deposit)
- Length of tenancy : 12 Months
- Council tax band : B

Floor Plan



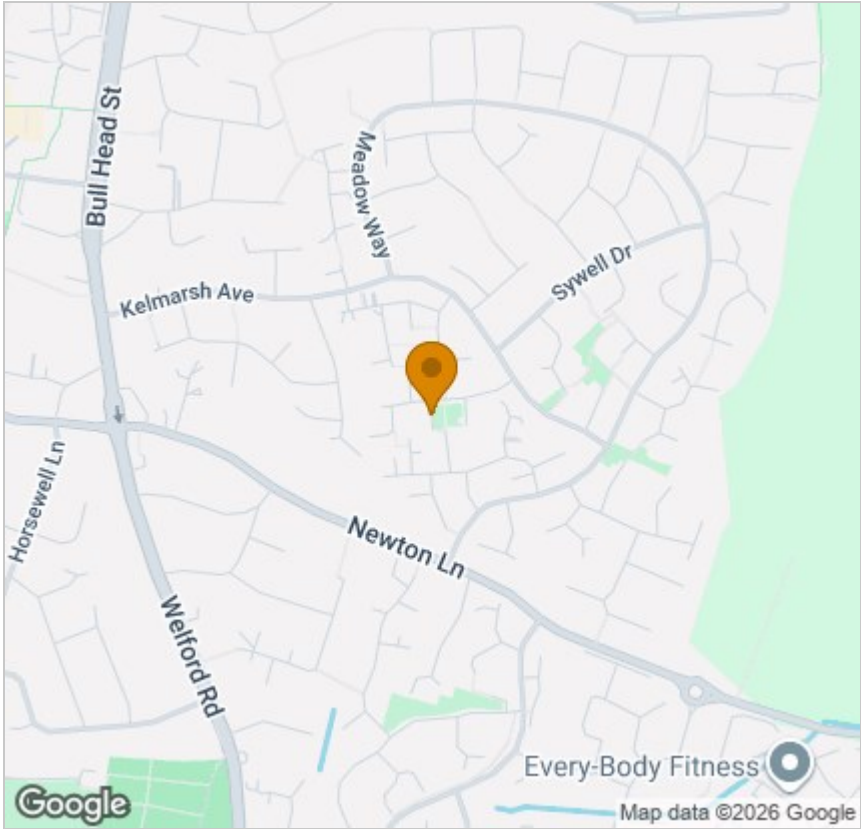
Viewing

Please contact our Wigston Lettings Office on 0116 2883872 if you wish to arrange a viewing appointment for this property or require further information.

These particulars, whilst believed to be accurate are set out as a general outline only for guidance and do not constitute any part of an offer or contract. Intending purchasers should not rely on them as statements of representation of fact, but must satisfy themselves by inspection or otherwise as to their accuracy. No person in this firms employment has the authority to make or give any representation or warranty in respect of the property.

67 67 Long Street, Wigston, Leicestershire, LE18 2AJ
Tel: 0116 2883872 Email: lettings@astonandco.co.uk
<https://astonandco.co.uk/>

Area Map



Energy Efficiency Graph

